

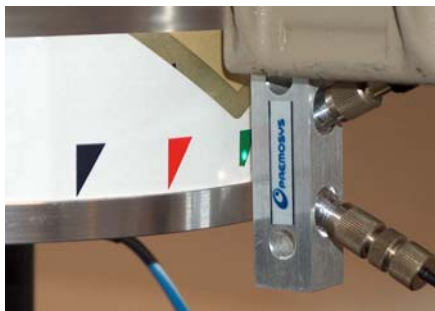
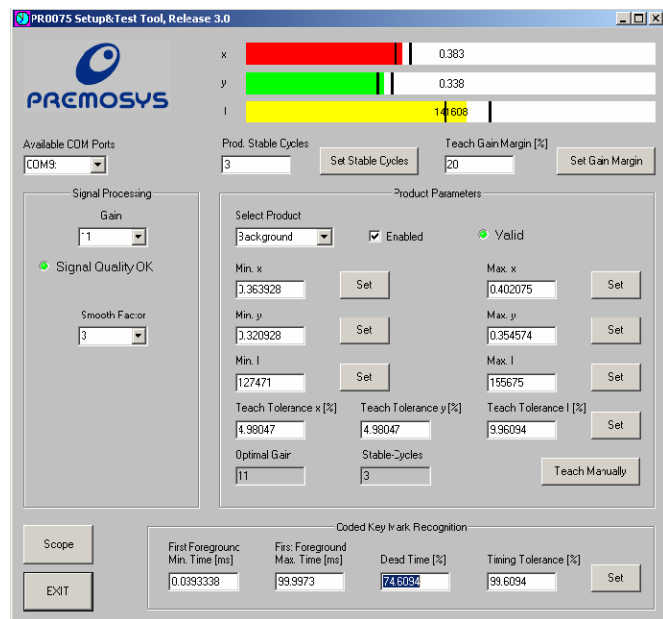
High-Speed Color Sensor PR0075



The color sensor PR0075 serves for the detection of color and intensity of test objects and disposes of an internal light source. The measuring procedure is based on measurements in comparison to reference products by means of user-specific parameters. Color and intensity of the test object can be parameterized and evaluated separately. The module is designed for a high speed of operation. Depending on the operation mode the sampling rate can range between 55 and 110kHz.

Main characteristics of the module:

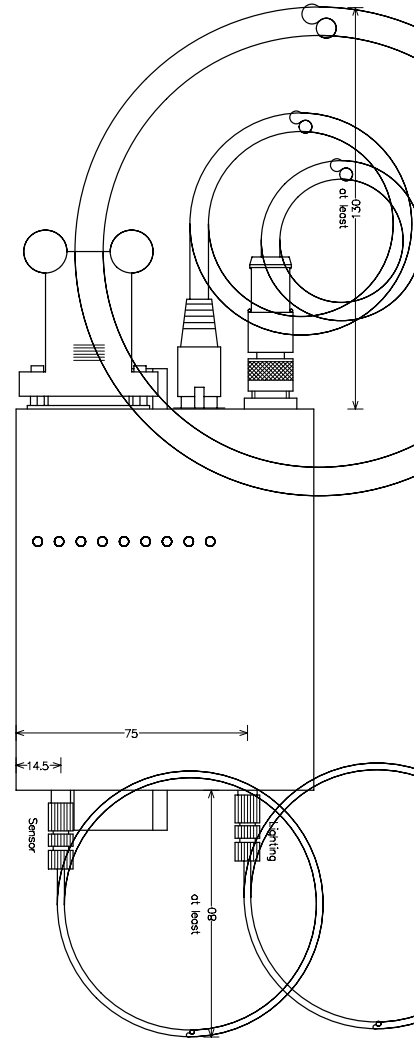
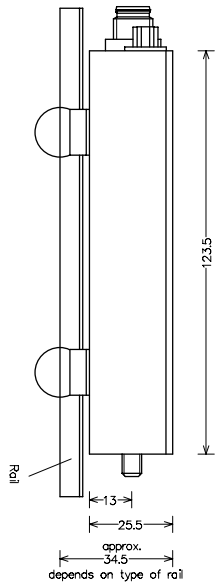
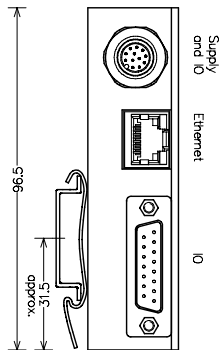
- Wavelengths 400 - 700nm
- Sampling rate between 55 and 110 kHz
- Jitter maximum +/- 9us
- Output x, y, Y (Chromaticity)
- 12 amplification levels
- Resolution 16 Bit per channel
- Internal light source 2,5W
- parallel registration of all Color channels
- Encoder input
- Ethernet-Interface (TCP-IP)
- WIN 32 DLL
- Measuring distance 6-30mm, depends on used light guides and optics
- Software tool for parameterization



The picture shows an application in the field of the printing industry. In the process colored wedge marks are detected.

Variable In-/ Outputs

- Input, Select Config
- Input, Start Teach in
- Input, Encoder
- Input, Start Measure
- Output, Teach in Ready
- High-Speed Output 1
- High-Speed Output 2
- High-Speed Output 3
- Analog Outputs, Channel #1 to #3



The adaptation of the test objects to the module is carried out via light guides and optics that can be delivered in the most different configurations.

Dimensions PR0075

- Length: approx. 115mm
- Width: approx. 97mm
- Height: approx. 26mm
- Weight: approx. 200g

Power supply

- 24V DC +/-10%; 0,5A